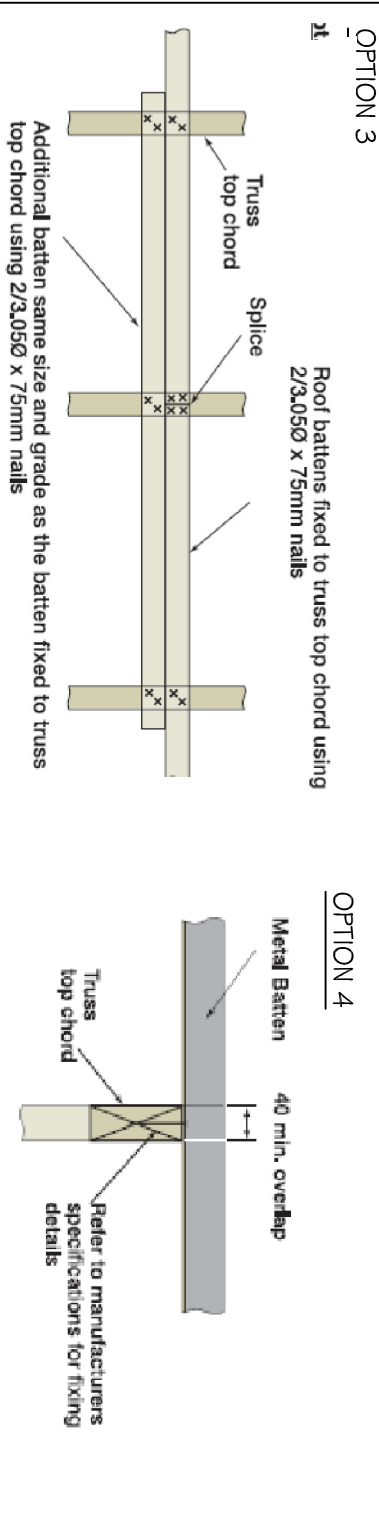
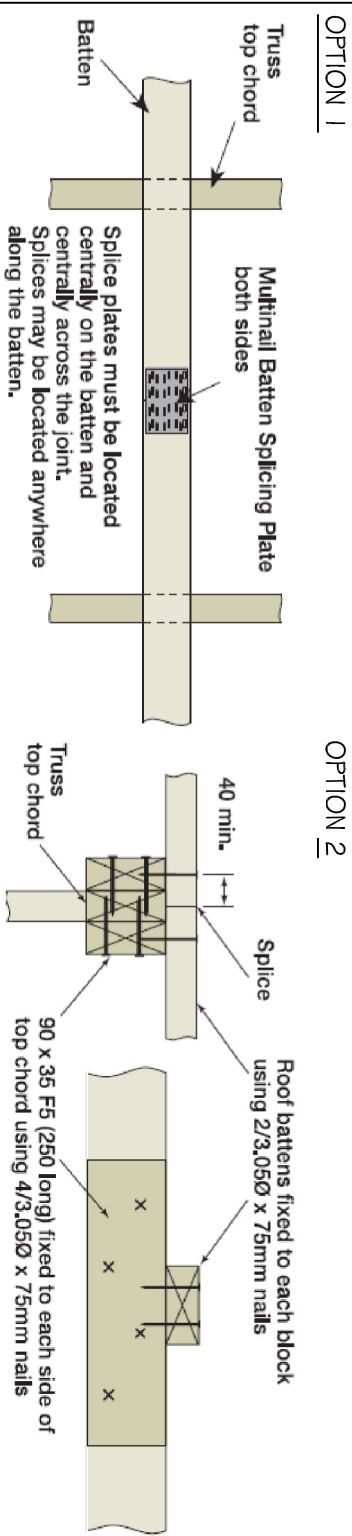
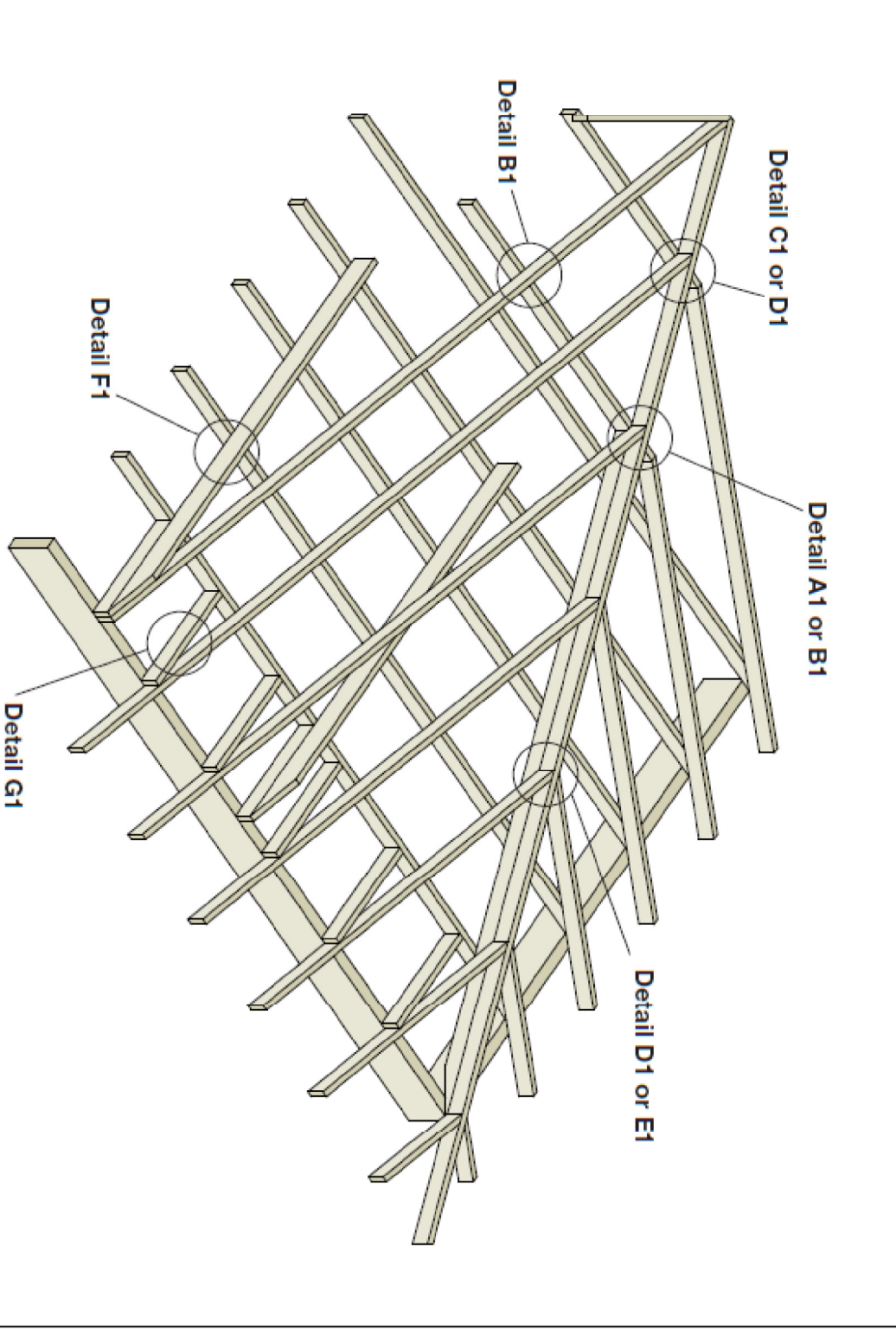


N1 - IRON ROOF 2 - STOREY

JOINT GROUP JD4		*TIEDOWNS TO LINE UP VERTICALLY*	SPECIFIC TIE-DOWN FIXINGS
JOINT		NOMINAL FIXINGS	
WALL FRAMING			
TOP & BOTTOM PLATES TO STUDS		2/75 x 3.05mm NAILS	MULTINAIL ST4 STUD TIE @ 1200mm CTS
NOGGIN5		2/75 x 3.05mm NAILS SKEWED OR THROUGH NAILED	N/A
BOTTOM PLATE TO CONCRETE SLAB		1/75mm MASONARY NAIL @ 1200mm CTS MAX.	1/12x100 SCREWBOLT WITH 50mm SQUARE WASHER or equivalent, eg. dywidag® @ 1200 CTS & WITHIN 100mm OF JAMB STUDS
NAIL LAMINATED STUDS		2/75 x 3.05mm NAILS @ 600mm CTS	N/A
SIDES OF OPENINGS TO PLATE		2 / 75 x 3.05mm NAILS TO 35mm PLATE	OPENINGS 0-1800 - 1/30x0.8 G.I. STRAP WITH 6/12.8NAILS @ EACH END OPENINGS 1800-3600 - 2/30x0.8 G.I. STRAP WITH 6/12.8NAILS @ EACH END
FIXING TO SLAB/FLOOR @ EACH END OF STRUCTURAL BRACE		N / A	1/10x100 SCREWBOLT WITH 40x40x3mm PLATE WASHER OR M10 BOLT + WASHER
ROOF FRAMING			
RAFTER / TRUSS TO FRAME		2/75mm SKEW NAILS	1/30x0.8 G.I. STRAP WITH 3/12.8mm NAILS @ EACH END OR A FRAMING ANCHOR
RAFTER / TRUSS INTERNAL SUPPORT TO FRAME		2/75mm SKEW NAILS	1/30x0.8 G.I. STRAP WITH 3/12.8mm NAILS @ EACH END OR A FRAMING ANCHOR
CEILING JOISTS TO TOP PLATE		2/75mm SKEW NAILS	N/A
CEILING JOISTS TO RAFTERS		2/75mm MACHINE DRIVEN NAILS	1M10 CH BOLT AT EACH END TO EVERY COMMON RAFTER > 4.2
COLLAR TIES TO RAFTERS		3/75mm MACHINE DRIVEN NAILS < 4.2	N/A
RAFTER TO RAFTER @ RIDGE		75x38 TIE WITH 3/75x3.05 NAILS EACH END AND TO EVERY COMMON RAFTER	N/A
RAFTER TO UNDERPURLIN		2/75mm SKEW NAILS	1/30x0.8 G.I. STRAP @ 3.0m CTS TIEDOWN TO FLOOR VIA WALLS
HIP RAFTER TO UNDERPURLIN		CLEAT PLATE TO UNDERPURLIN / HIP CONNECTION	N/A
VERANDAH BEAM TO POSTS		2M10 BOLTS	N/A
ROOF BATTENS		1 No 14 x 100mm TYPE 17 SCREW	N/A
FLOOR FRAMING			
BOTTOM PLATE TO FLOOR FRAME		1/75x3.05mm MACHINE DRIVEN NAILS @ 1200 CTS MAX	N/A
UPPER FRAME TO LOWER FRAME		N/A	1M10 CUPHEAD BOLT @ 1200 CTS MAX (100mm MAX FROM TRUSS)
EACH END OF STRUCTURAL BRACE		N/A	1M10 CUPHEAD BOLT @ 1200 CTS MAX
ROOF BATTEN SPLICING CRITERIA			



JOINT TYPE		TRUSS CONNECTIONS	
		FIXING DETAILS	
DETAIL A1 HIP RAFTER TO TRUNCATED TRUSS		TOP CHORD - ONE FRAMING ANCHOR BENT TO SUIT, WITH 4/30mm x 2.8mm REINFORCED-HEAD NAILS INTO THE SIDE OF EACH TOP CHORD FOR TRUNCATED GIRDER	
DETAIL B1 JACK RAFTER TO TRUNCATED TRUSS		TOP CHORD - ONE FRAMING ANCHOR BENT TO SUIT, WITH 4/30mm x 2.8mm REINFORCED-HEAD NAILS INTO THE SIDE OF EACH TOP CHORD FOR TRUNCATED GIRDER	
DETAIL C1 EXTENDED JACK RAFTER TO TOP CHORD OF TRUNCATED STANDARD TRUSSES		2/75mm x 3.05 SKEW NAILS INTO THE SIDE OF EACH TOP CHORD	
DETAIL D1 CREEPER OR JACK RAFTER TO HIP RAFTER (MAX STATION 1800mm)		TOP CHORD - 3/75mm x 3.05 NAILS THROUGH JACK RAFTER TOP CHORD INTO HIP RAFTER TOP CHORD	
DETAIL E1 CREEPER OR JACK RAFTER TO HIP RAFTER (MAX STATION 3000mm)		TOP CHORD - FIX AS D1 PLUS ONE MITRE PLATE WITH 6/30mm x 2.80 REINFORCED-HEAD NAILS TO EACH END OF TOP CHORD	
DETAIL F1 HANGING BEAM FIXING		FIX HANGING BEAM TO CEILING JOIST WITH BLOCK OR JOIST TIE WITH MIN 2/12.8 NAILS HANGING BEAM TIED DOWN ON EACH END AS PER TIEDOWN REPORT	
DETAIL G1 CEILING TRIMMER FIXING		FIX CEILING TRIMMER TO RAFTER AND CEILING JOIST WITH 2/3.05 NAILS RAFTER TIED DOWN AS PER TIE DOWN REPORT	



DWELLING 3		WP PROPERTY GROUP	
		541 ANZAC HWY, GLENELG EAST	
		Page	5/5
		Date:	28/05/18
		Scale:	1 : 100
		JOB No:	TT09728